

This postcard is a companion piece to the Radical Empathy in Archival Practice poster created by Gracen Brilmyer for the *Journal of Critical Library and Information Science (JCLIS)* special issue on the topic. Applying Michelle Caswell and Marika Cifor's framework of radical empathy to archival practice allows us to critically and consciously shift power relations and prioritize the relationships archivists have with archival creators, donors, subjects, communities, and each other.

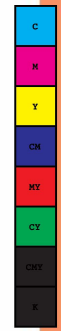
As a way to reflect on relationship building, consider the various archival relationships in which you find yourself. Please pair the front of this postcard with the relationship that you think the graphic illustrates. You can also write in and create your own relationships around radical empathy in the archives. Feel free to mail this postcard out to someone as well.

For more information visit:
<https://bit.ly/radical-empathy-issue>





archivist



This postcard is a companion piece to the Radical Empathy in Archival Practice poster created by Gracen Brilmyer for the *Journal of Critical Library and Information Science (JCLIS)* special issue on the topic. Applying Michelle Caswell and Marika Cifor's framework of radical empathy to archival practice allows us to critically and consciously shift power relations and prioritize the relationships archivists have with archival creators, donors, subjects, communities, and each other.

As a way to reflect on relationship building, consider the various archival relationships in which you find yourself. Please pair the front of this postcard with the relationship that you think the graphic illustrates. You can also write in and create your own relationships around radical empathy in the archives. Feel free to mail this postcard out to someone as well.

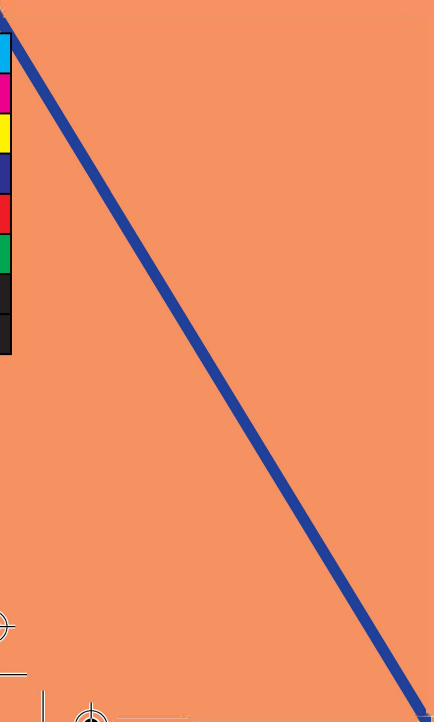
For more information visit:
<https://bit.ly/radical-empathy-issue>



- perfecting identity
- collecting and identifying subjects,
- prioritizing neutral role of
- cultures, donors, creators,
- feigned,
- creators,

OSI

archivist



This postcard is a companion piece to the Radical Empathy in Archival Practice poster created by Gracen Brilmyer for the *Journal of Critical Library and Information Science (JCLIS)* special issue on the topic. Applying Michelle Caswell and Marika Cifor's framework of radical empathy to archival practice allows us to critically and consciously shift power relations and prioritize the relationships archivists have with archival creators, donors, subjects, communities, and each other.

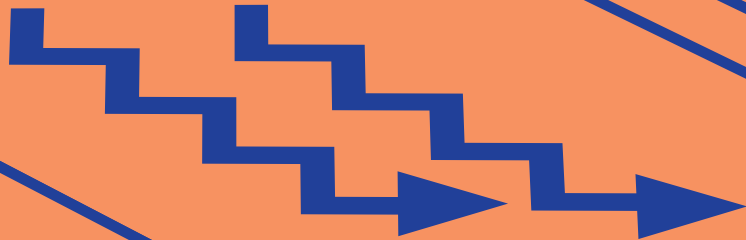
As a way to reflect on relationship building, consider the various archival relationships in which you find yourself. Please pair the front of this postcard with the relationship that you think the graphic illustrates. You can also write in and create your own relationships around radical empathy in the archives. Feel free to mail this postcard out to someone as well.

For more information visit:
<https://bit.ly/radical-empathy-issue>





no rights rat...
 unities
 nership rather than honoring
 objects and the collective rights
 sensitive information



archivist

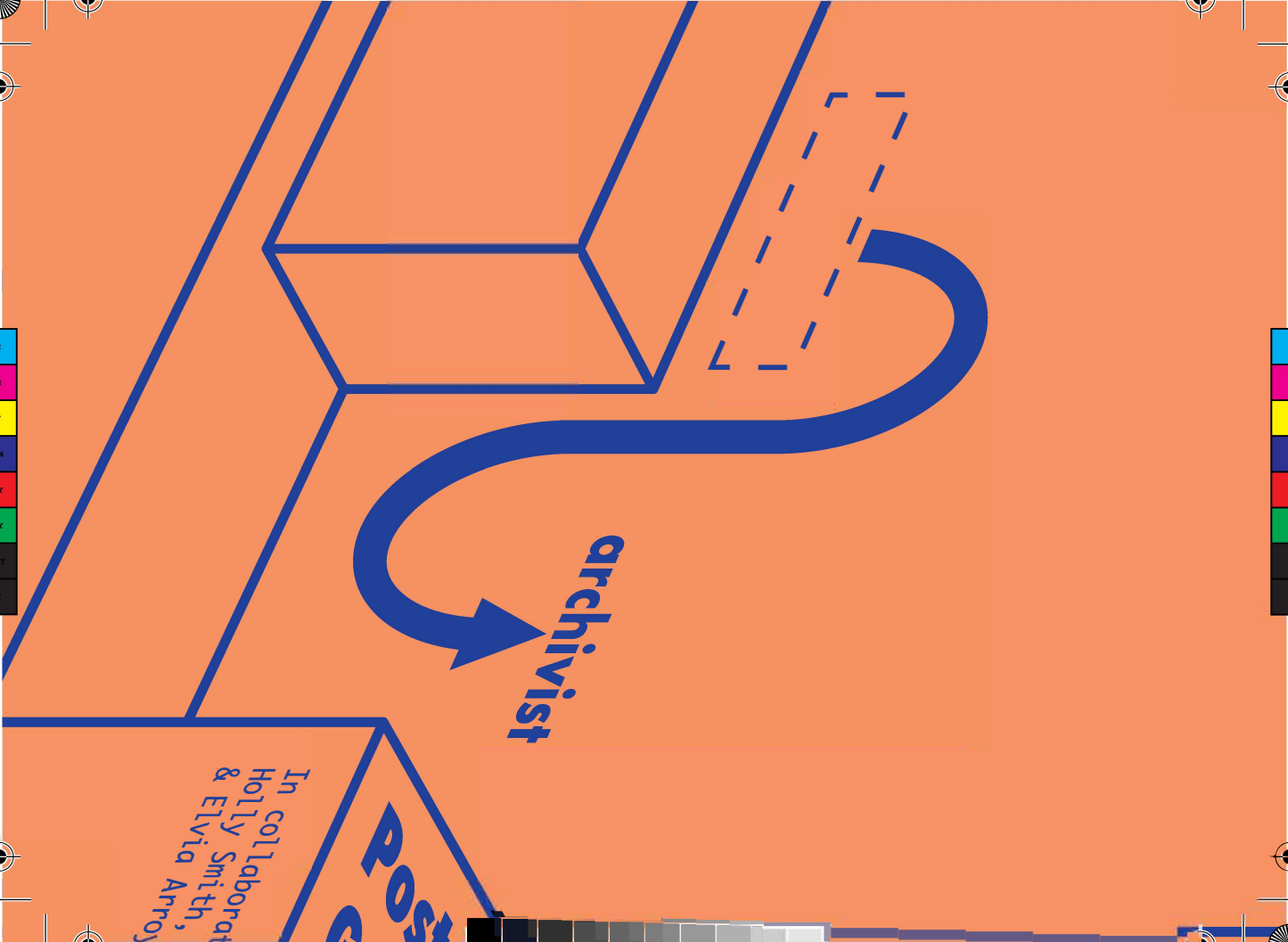
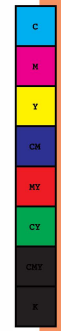


This postcard is a companion piece to the Radical Empathy in Archival Practice poster created by Gracen Brilmyer for the *Journal of Critical Library and Information Science (JCLIS)* special issue on the topic. Applying Michelle Caswell and Marika Cifor's framework of radical empathy to archival practice allows us to critically and consciously shift power relations and prioritize the relationships archivists have with archival creators, donors, subjects, communities, and each other.

As a way to reflect on relationship building, consider the various archival relationships in which you find yourself. Please pair the front of this postcard with the relationship that you think the graphic illustrates. You can also write in and create your own relationships around radical empathy in the archives. Feel free to mail this postcard out to someone as well.

For more information visit:
<https://bit.ly/radical-empathy-issue>





In collaboration
with Holly Smith,
& Elvina Arroyo

Post



This postcard is a companion piece to the Radical Empathy in Archival Practice poster created by Gracen Brilmyer for the *Journal of Critical Library and Information Science (JCLIS)* special issue on the topic. Applying Michelle Caswell and Marika Cifor's framework of radical empathy to archival practice allows us to critically and consciously shift power relations and prioritize the relationships archivists have with archival creators, donors, subjects, communities, and each other.

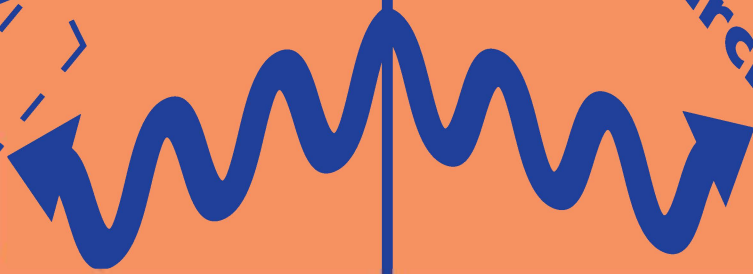
As a way to reflect on relationship building, consider the various archival relationships in which you find yourself. Please pair the front of this postcard with the relationship that you think the graphic illustrates. You can also write in and create your own relationships around radical empathy in the archives. Feel free to mail this postcard out to someone as well.

For more information visit:
<https://bit.ly/radical-empathy-issue>



the ability and willingness to place oneself in
the perceptions and viewpoints of others”
empathy is **radical** if it critically and consciously shifts
existing power relations in favor of those who are marginal

archivist



ives?



This postcard is a companion piece to the Radical Empathy in Archival Practice poster created by Gracen Brilmyer for the *Journal of Critical Library and Information Science (JCLIS)* special issue on the topic. Applying Michelle Caswell and Marika Cifor's framework of radical empathy to archival practice allows us to critically and consciously shift power relations and prioritize the relationships archivists have with archival creators, donors, subjects, communities, and each other.

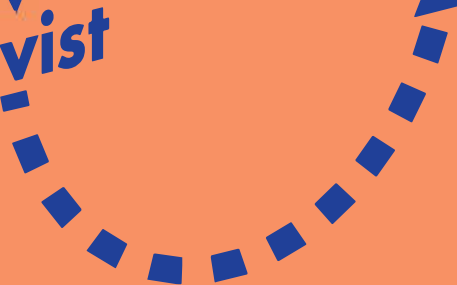
As a way to reflect on relationship building, consider the various archival relationships in which you find yourself. Please pair the front of this postcard with the relationship that you think the graphic illustrates. You can also write in and create your own relationships around radical empathy in the archives. Feel free to mail this postcard out to someone as well.

For more information visit:
<https://bit.ly/radical-empathy-issue>





archivist



This postcard is a companion piece to the Radical Empathy in Archival Practice poster created by Gracen Brilmyer for the *Journal of Critical Library and Information Science (JCLIS)* special issue on the topic. Applying Michelle Caswell and Marika Cifor's framework of radical empathy to archival practice allows us to critically and consciously shift power relations and prioritize the relationships archivists have with archival creators, donors, subjects, communities, and each other.

As a way to reflect on relationship building, consider the various archival relationships in which you find yourself. Please pair the front of this postcard with the relationship that you think the graphic illustrates. You can also write in and create your own relationships around radical empathy in the archives. Feel free to mail this postcard out to someone as well.

For more information visit:
<https://bit.ly/radical-empathy-issue>

